



COMPARISON OF ORGAN DONATION
DATA

FOR THE FIRST QUARTER, 2000-2010

AUSTRALIAN CAPITAL TERRITORY, NEW
SOUTH WALES & AUSTRALIA

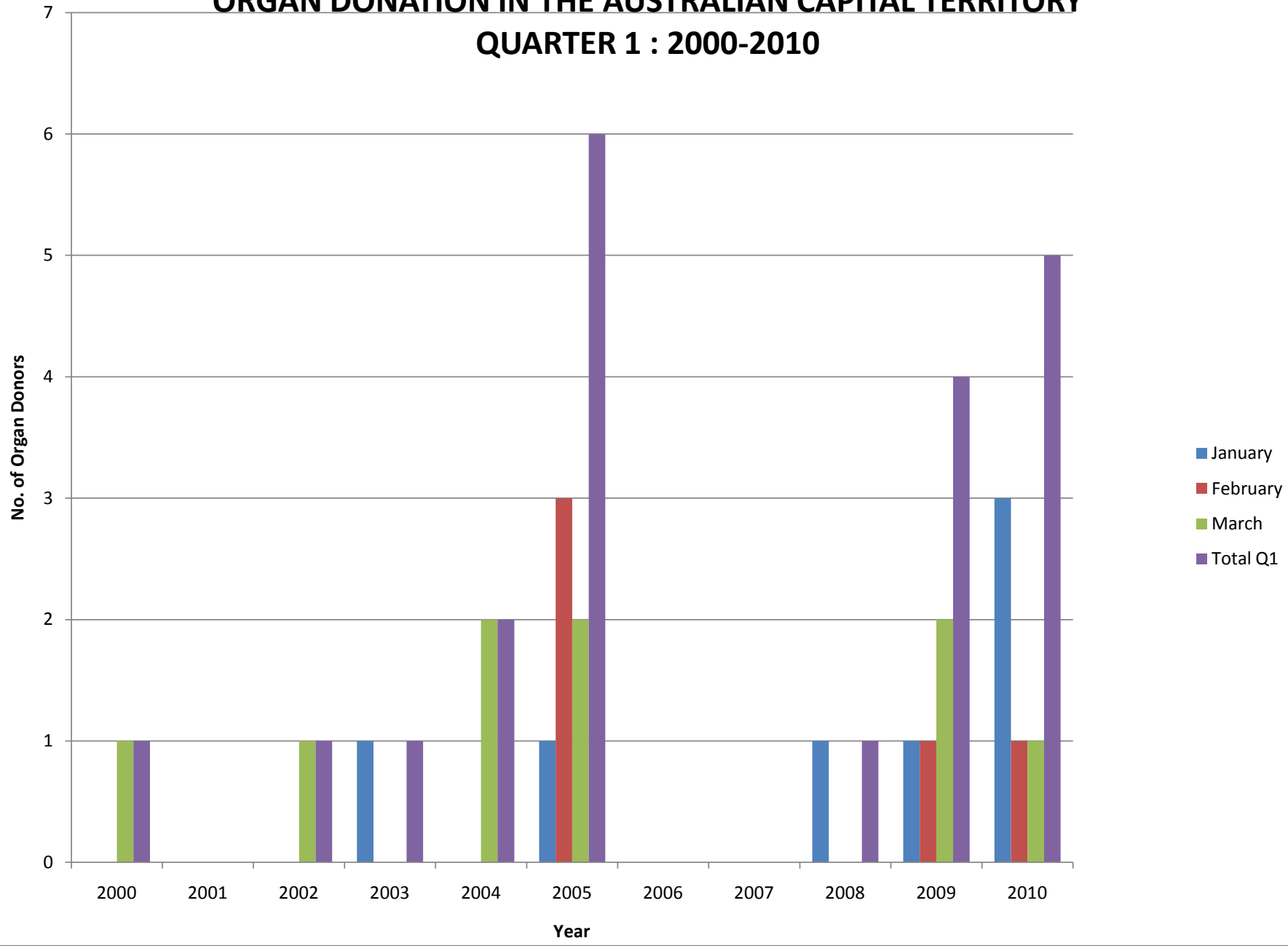
Data prepared by Gift of Life Incorporated

Based on data from Australia & New Zealand Organ Donation Registry
www.anzdata.org.au

FIRST QUARTER ORGAN DONATION : 2000-2010
AUSTRALIAN CAPITAL TERRITORY

	January	February	March	Total Q1
2000	0	0	1	1
2001	0	0	0	0
2002	0	0	1	1
2003	1	0	0	1
2004	0	0	2	2
2005	1	3	2	6
2006	0	0	0	0
2007	0	0	0	0
2008	1	0	0	1
2009	1	1	2	4
2010	3	1	1	5

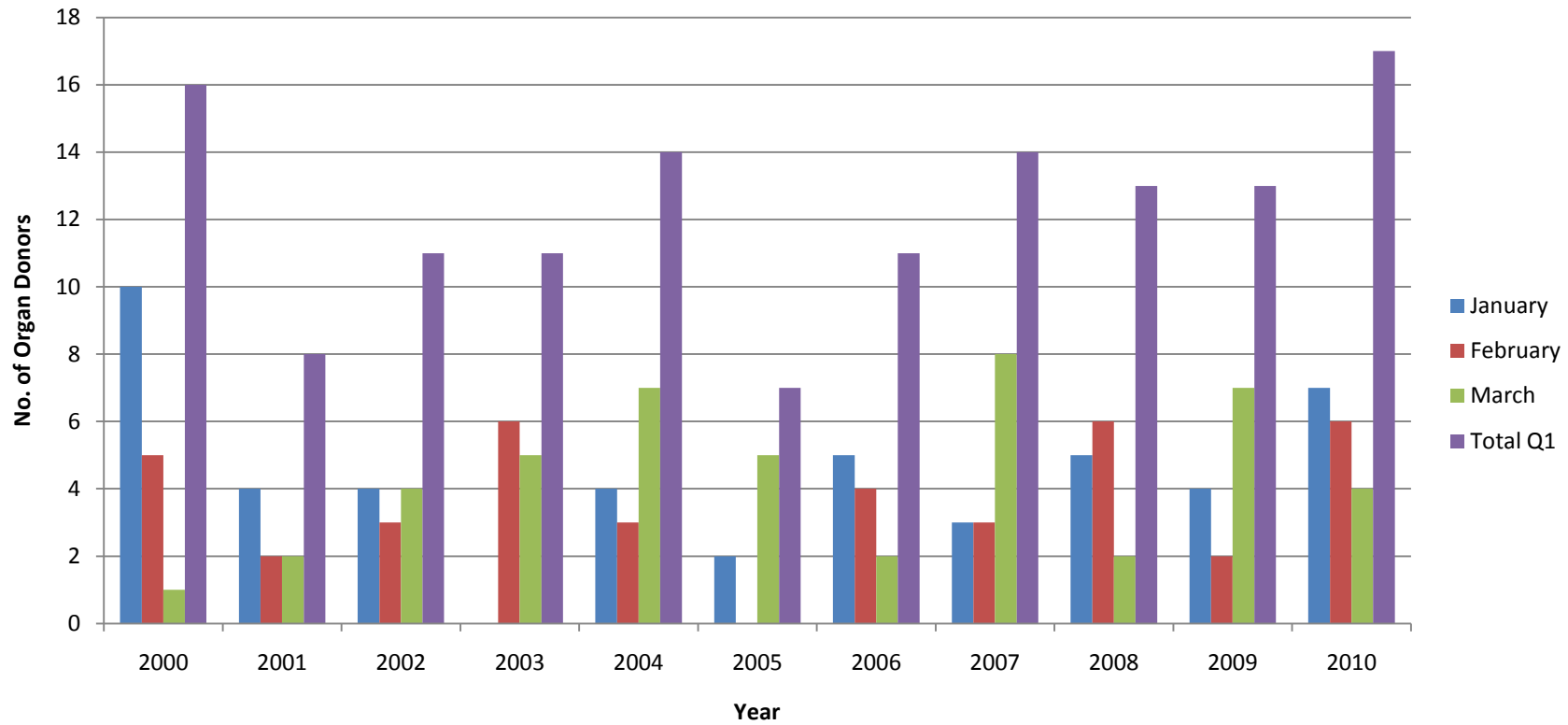
ORGAN DONATION IN THE AUSTRALIAN CAPITAL TERRITORY QUARTER 1 : 2000-2010



**FIRST QUARTER ORGAN DONATION : 2000-2010
NEW SOUTH WALES**

	January	February	March	Total Q1
2000	10	5	1	16
2001	4	2	2	8
2002	4	3	4	11
2003	0	6	5	11
2004	4	3	7	14
2005	2	0	5	7
2006	5	4	2	11
2007	3	3	8	14
2008	5	6	2	13
2009	4	2	7	13
2010	7	6	4	17

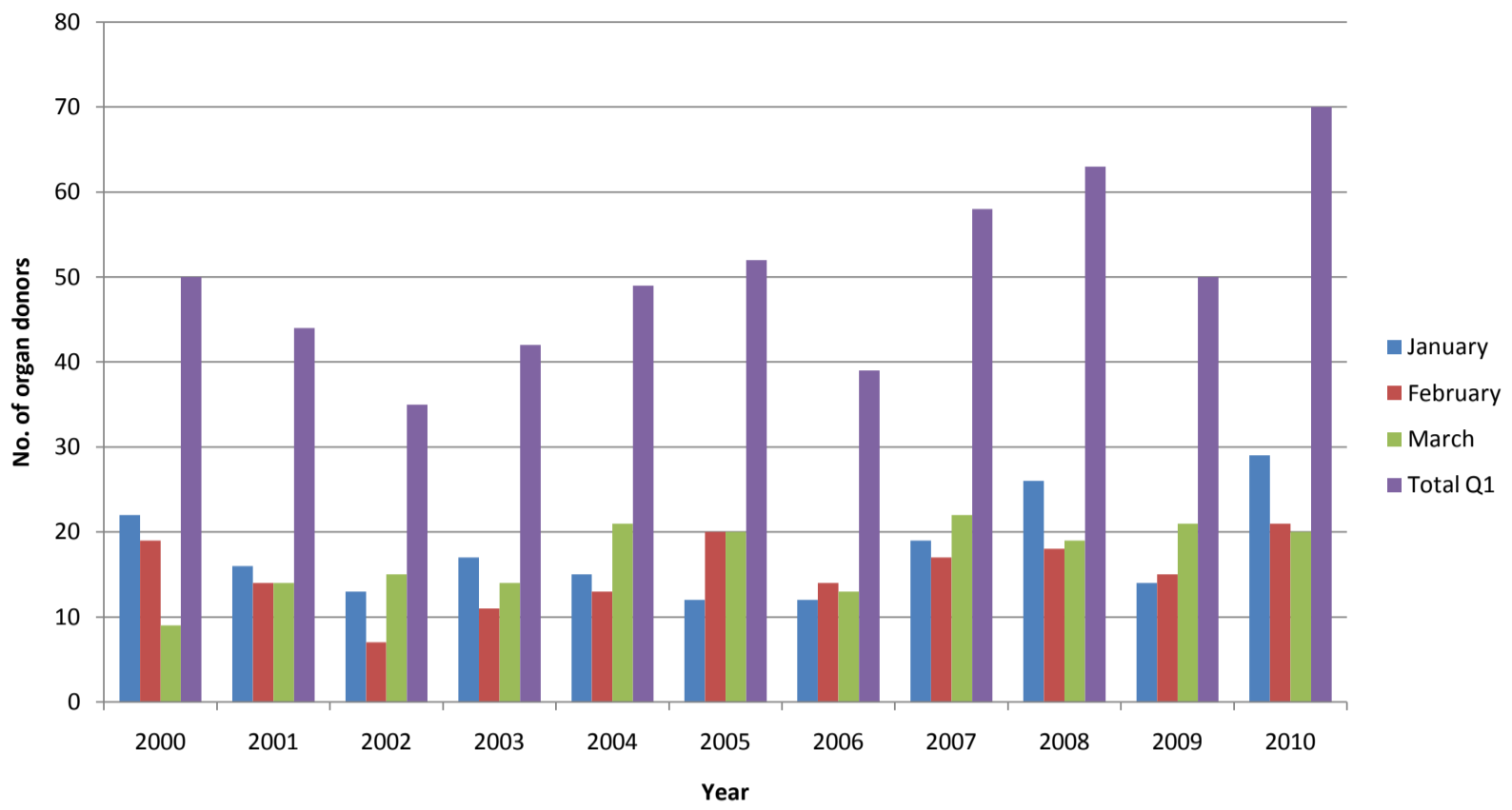
ORGAN DONATION, NEW SOUTH WALES QUARTER 1, 2000-2010



FIRST QUARTER ORGAN DONATION : 2000-2010
AUSTRALIA

	January	February	March	Total Q1
2000	22	19	9	50
2001	16	14	14	44
2002	13	7	15	35
2003	17	11	14	42
2004	15	13	21	49
2005	12	20	20	52
2006	12	14	13	39
2007	19	17	22	58
2008	26	18	19	63
2009	14	15	21	50
2010	29	21	20	70

ORGAN DONATION, AUSTRALIA Quarter 1, 2000-2010



**FIRST QUARTER ORGAN DONATION : 2000-2010
ACT, NSW AND AUSTRALIA**

	ACT	NSW	AUSTRALIA
2000	1	16	50
2001	0	8	44
2002	1	11	35
2003	1	11	42
2004	2	14	49
2005	6	7	52
2006	0	11	39
2007	0	14	58
2008	1	13	63
2009	4	13	50
2010	5	17	70

ORGAN DONATION, QUARTER 1 AUSTRALIA, ACT & NSW : 2000-2010

